



102 Love Lane, Salisbury, Wiltshire, SP1 2BG

£1,400 PCM

About The Property

A well presented three/four bedroom townhouse with a pretty detached garden, views of the Cathedral and within level walking distance of the city centre.

Accommodation comprises:

Entrance into a sitting room with feature fireplace. Kitchen/breakfast room with space for white goods, electric oven and hob. Utility room with door to garden and plumbing for a washing machine. Ground floor cloakroom.

First floor: bedroom one, double. Bathroom with shower over the bath. Bedroom two, single/study with feature fireplace. Second floor; two double bedrooms.

Outside; small communal courtyard with pathway leading to a private garden.

The property benefits from gas central heating and on street permit parking.

- Mid terrace house in a central location
- Level walk to city centre
- Sitting room with feature fireplace
- Kitchen/breakfast room
- Utility room and ground floor WC
- Three double bedrooms
- Single bedroom or study
- Detached private garden
- Gas central heating
- On street permit parking



4



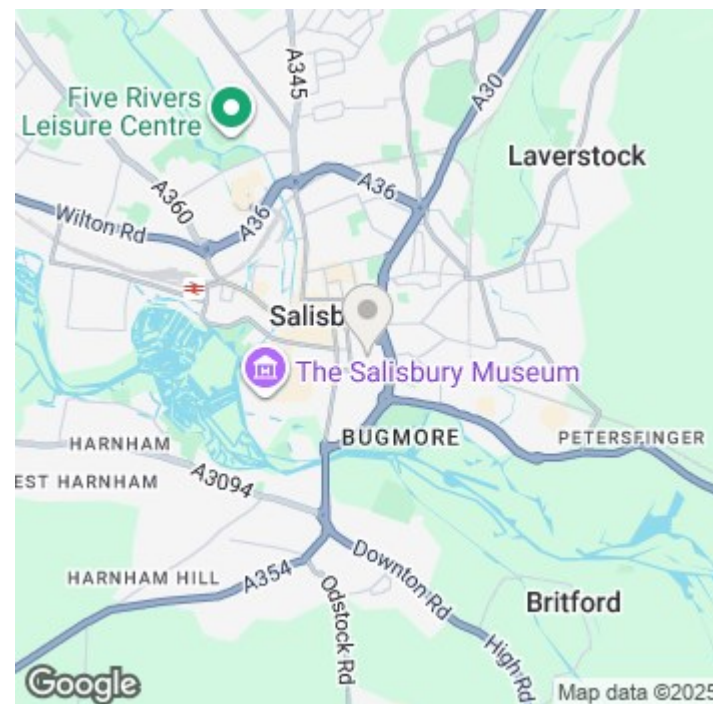
1



1

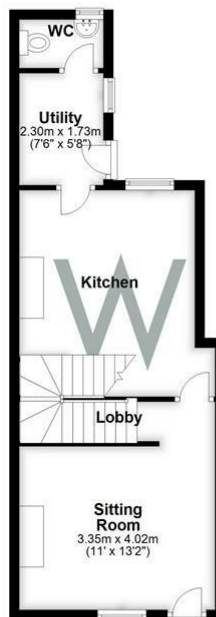


422.80 sq ft

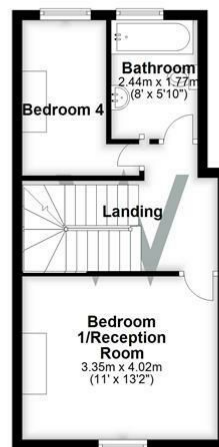




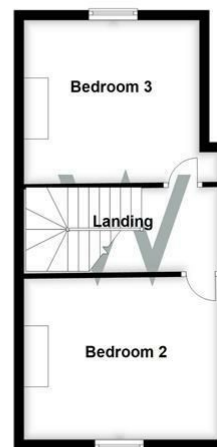
Ground Floor
Approx. 39.3 sq. metres (422.8 sq. feet)



First Floor
Approx. 33.2 sq. metres (357.7 sq. feet)



Second Floor
Approx. 33.4 sq. metres (360.0 sq. feet)



Total area: approx. 105.9 sq. metres (1140.4 sq. feet)

Further Information

Let available date: 22nd August 2025 NB: This date is provisional and will only be confirmed once referencing has been successfully completed.

Property type: House - Townhouse

Furnish type: Unfurnished

Deposit: £1,615

Local authority: Wiltshire

Council Tax: Band C

EPC: D(59)

Energy Efficiency Rating

	Current	Potential
Very energy efficient - lower running costs		
(92 plus) A		85
(81-91) B		
(69-80) C		
(55-68) D	59	
(39-54) E		
(21-38) F		
(1-20) G		
Not energy efficient - higher running costs		
England & Wales		EU Directive 2002/91/EC 